

# SNAP-IN BATTENS



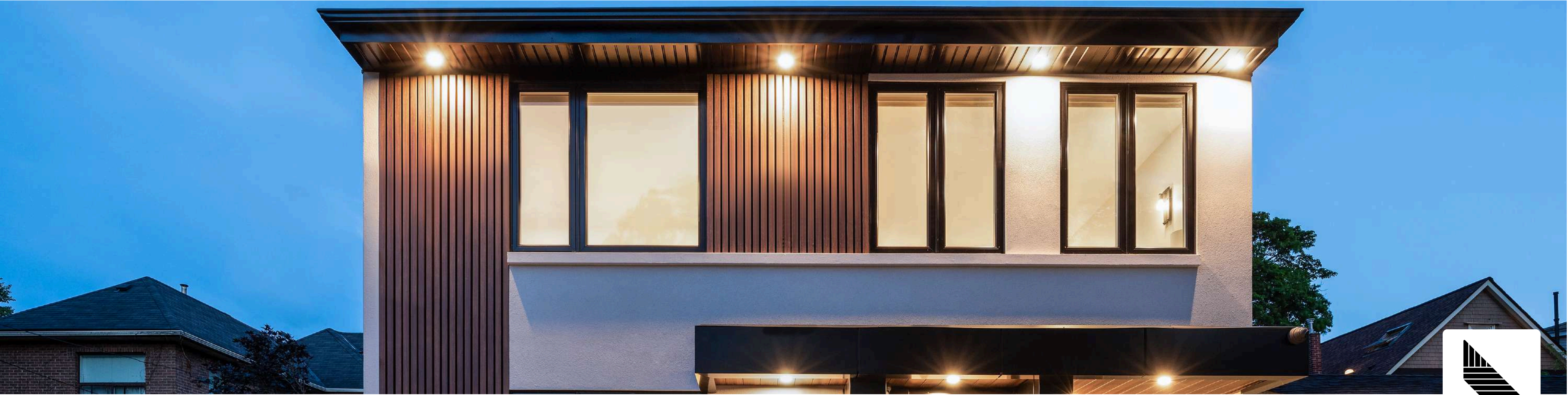
## CONTENTS

A NEW COMPLETE AND VERSATILE SYSTEM	01
APPLICATION & MECHANICAL FIXING	02
ARCHITECTURAL DEPTH & VERSATILITY SIZES	03
LARGE-FORMAT PROFILES & ADVANCED ENGINEERING	04
2"X5" LOUVRE	05
PERFORMANCE PROPERTIES & ADVANTAGES	06
SNAP-IN BATTEN INSTALLATION	07
SUSTAINABLE COMMITMENT	08
PERFORMANCE	09
FINISHES	10

## WELCOME TO THE FUTURE OF DIMENSIONAL DESIGN

LUXYCLAD® is a premier Canadian manufacturer committed to delivering high-quality architectural solutions across North America. As a leader in premium aluminum systems, we offer a high-performance, low-maintenance alternative to traditional timber battens.

The LUXYCLAD® Snap-In Batten Series provides a complete architectural system of seamless extruded aluminum profiles integrated with precisely engineered hidden-fastening components. This innovative two-piece system allows for bold, three-dimensional designs without the clutter of visible screws or rivets. Each batten features a hyper-durable powder-coated finish applied to premium aluminum substrates, ensuring long-lasting protection, rich color depth, and enduring architectural appeal in even the harshest environments.



# A NEW COMPLETE AND VERSATILE SYSTEM



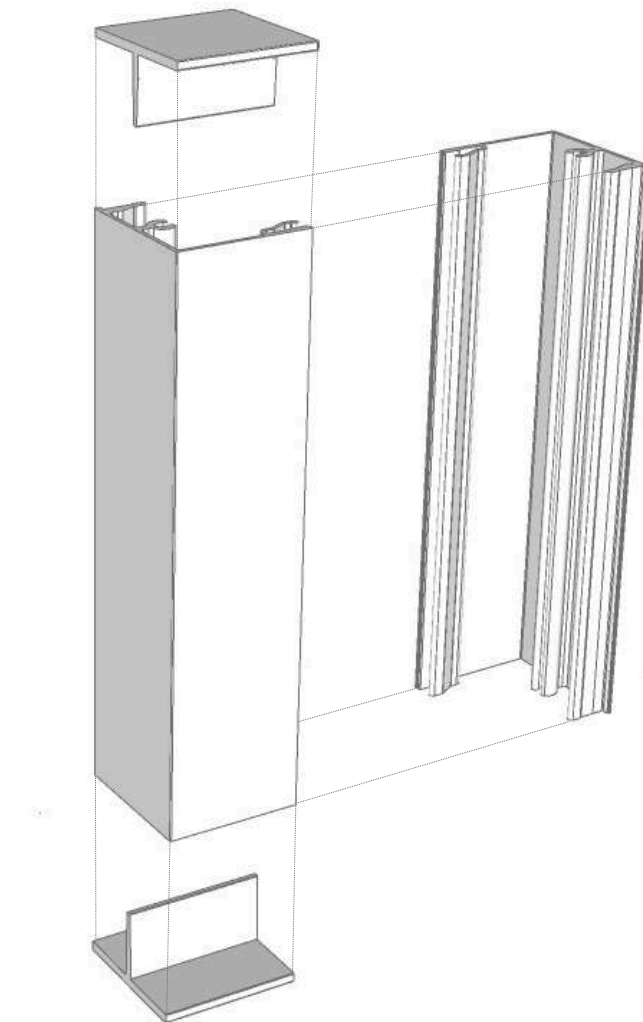
LUXYCLAD®'s Snap-In Battens are lightweight, easy-to-install, and manufactured from extruded aluminum, offering a dimensionally stable, long-lasting, non-combustible, and low-maintenance alternative to timber. Snap-In Battens are coated with an eco-friendly and hyper-durable powder-coated finish, providing superior durability and a photo-realistic finish. Snap-In Battens allow for design flexibility and are suitable for a wide range of applications.

Snap-in batten is a long term product with a multitude of design and utility possibilities with ceilings, fencing, shading, and privacy screens just being a named few. An engineered snap-fit design allows for a simple yet robust installation, resulting in stunning linear effects.



## APPLICATION & MECHANICAL FIXING

Snap-In Battens are comprised of 2 piece snap fit extrusions with matching end-caps, utilizing hidden #12 fasteners to mechanically fasten one piece to the substrate with the second, matching piece snapping in to complete the pair.



LUXYCLAD®'s Snap-In Battens are suitable for use on external walls as an open joint rainscreen siding system and are designed to be installed vertically, horizontally, or on external or internal walls and ceiling as decorative cladding for residential and commercial buildings.



## ARCHITECTURAL DEPTH & VERSATILITY SIZES

### Redefining Architectural Scale

Our large-format Snap-In Battens are engineered for high-impact designs that require bold lines and significant depth. Designed for both performance and aesthetics, these profiles offer a seamless, screw-free finish at any scale.

Profile Width	Available Depths	Best For...
2" Wide	2", 4", 6"	Residential feature walls, soffits, and interior ceilings.
2" Wide (Large)	8", 10"	Commercial facades, high-span exteriors, and bold vertical accents.





## LARGE-FORMAT PROFILES & ADVANCED ENGINEERING

**Large Scale Impact:** Our 2" x 8" and 2" x 10" profiles are among the largest in the industry, perfect for high-visibility commercial projects.

**Dimensional Design:** Mix and match different depths (e.g., alternating 2x2 and 2x6) to create a custom 3D pattern.

**Lightweight Durability:** Even our largest 10" battens are made from premium lightweight aluminum, ensuring easy installation without the weight of traditional materials.

**Seamless Finish:** Every size utilizes our signature snap-in technology, hiding all fasteners for a clean, screw-free aesthetic.



2" X 8" BATTEN  
24' LENGTHS



2" X 10" BATTEN  
24' LENGTHS

### Key Features:

- **Grand Architectural Scale:** Available in 2" x 8" and 2" x 10" profiles to create dramatic shadow lines and a high-end textured facade.
- **Signature Snap-In Technology:** A fully hidden fastener system with an interlocking design that ensures a clean, streamlined look without visible screws or rivets.
- **Precision Detailing:** Optional color-matched end caps provide a refined, finished edge for professional-grade installations.
- **Elite Finish Options:** Choose from our high-durability Hyper-Realistic Woodgrains or our architectural-grade Powder Coat finishes.
- **Versatile Application:** Engineered for maximum durability in Exterior Facades and sophisticated Interior Feature Walls or ceilings.
- **Fast, Secure Installation:** The two-piece snap-cap system reduces labor time while maintaining a structural, secure fit.



## 2"X5" LOUVRE

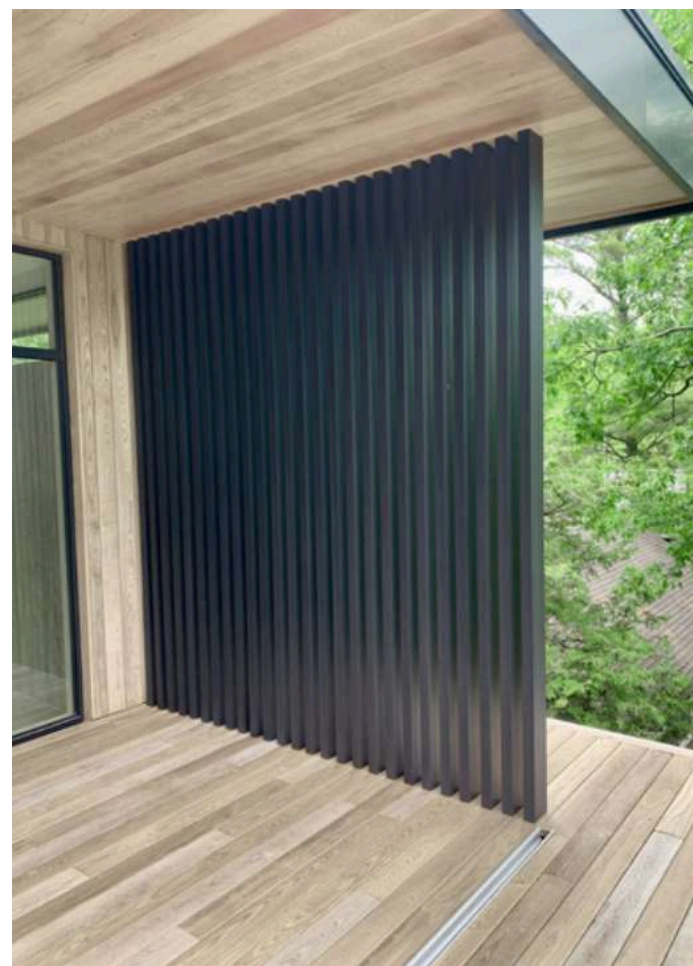
Engineered for high-performance architectural applications, our 2" x 5" profile offers a bold, structural aesthetic. This profile is compatible with AAMA 2604/05 certified finishes, providing superior durability and UV resistance for exterior facades.

### Functional Benefits

**Passive Solar Shading:** Ideal for use over windows to reduce solar heat gain while maintaining natural light.

**Privacy Screening:** The 5" depth provides excellent sightline occlusion when viewed from an angle—perfect for mechanical screening or balcony privacy.

**Airflow Optimization:** Engineered for use in ventilated rainscreen systems, allowing for critical moisture management and airflow behind the cladding.



### Installation Efficiency

**Precision Fit:** Features our signature snap-in locking mechanism for a fastener-free finish.

**Structural Rigidity:** The reinforced internal webbing allows for longer spans between supports compared to smaller profiles, reducing overall sub-structure costs.

**Lightweight Aluminum:** Despite its bold look, the hollow-core extrusion ensures easy handling on-site without the need for heavy lifting equipment.

**Multi-Directional Installation:** Can be installed horizontally for a sleek, grounded look or vertically to emphasize building height.



## THE LUXYCLAD® ADVANTAGE

### PERFORMANCE PROPERTIES



- Non-Combustible (ASTM, ULC)
- UV resistant (AAMA 2604/05)
- Resistant to abrasion and impact
- Stain resistant
- Resistant to ice and thawing
- Non-corrosive (ISO)
- Non-toxic
- Sustainable

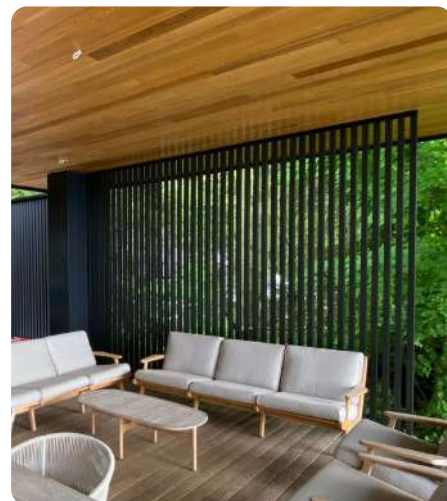


### ADVANTAGES

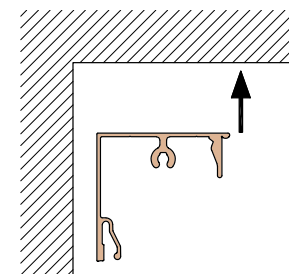
- Extruded aluminum (6063 T-5 grade)
- Vertical or horizontal orientations
- Hidden fastening system
- 50 x 125 mm and 50 x 50 mm formats
- Custom lengths available (3,657 - 7,315 mm)
- Direct Fixing
- Easy Installation
- Variable baffle spacing
- Full services and lighting integration
- Powder coated finish (solid, metallic, and wood-grain options)



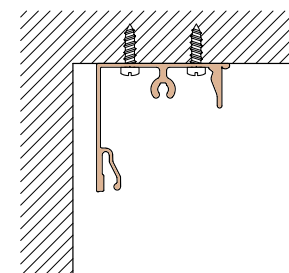
## SNAP-IN BATTEN INSTALLATION



Extruded Aluminum End Caps are available for each Snap-In Batten profile and size. End caps are designed for friction fitting but structural adhesive may be used for high wind areas where required.

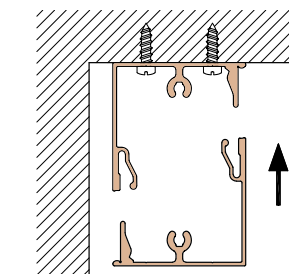


**STEP 1** Apply the 2 piece batten base to the supporting structure. To ensure a straight, consistent and parallel installation, it is strongly recommended that a level be used when fastening each base piece.

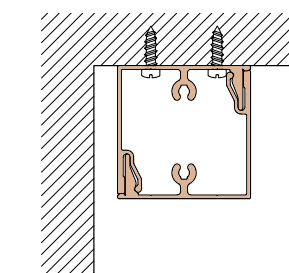


**STEP 2** Once positioned, mechanically fasten the back "L" piece to the substrate using #12 (recommended) or #10 (minimum) non-corrosive fasteners every 6' on center.

**Note** Ensure the fasteners being used are suitable for the substrate and environment.



**STEP 3** Once the back "L" has been fastened, is square, level and plumb, press the front "L" portion in until you hear a snap. Measure for desired gap and continue "Step 1" through "Step 3" for each row until completed.



**STEP 4** Ensure each cap is fully snapped into place.

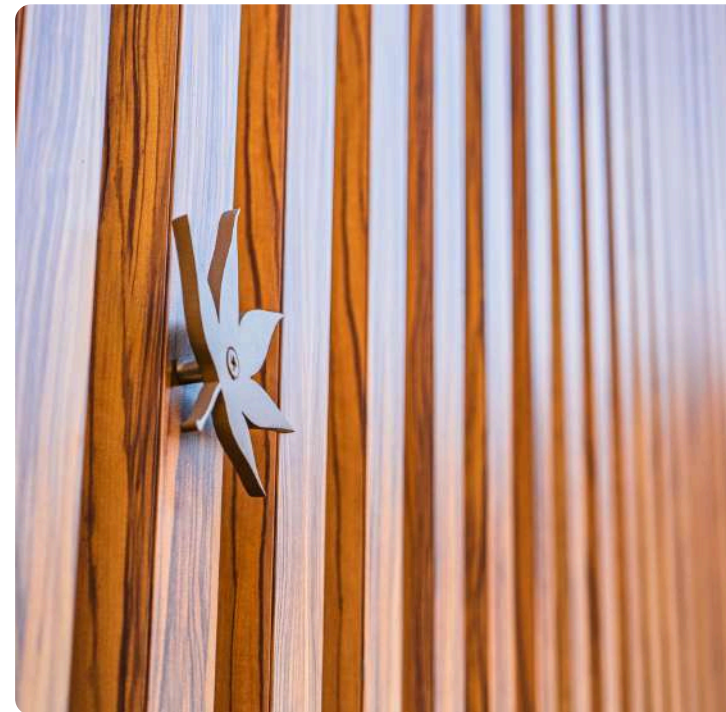


## SUSTAINABLE COMMITMENT

At LUXYCLAD®, we are dedicated to minimizing our environmental impact. Our manufacturing process is designed to adhere to green building standards, ensuring a responsible footprint.

### Sustainable Materials

Crafted from 70% recycled aluminum, LUXYCLAD® systems are fully recyclable at the end of their life cycle, reinforcing our commitment to a circular economy and sustainable construction.



LUXYCLAD® products meet or exceed industry sustainability standards and certifications. By combining design flexibility, performance, and environmental responsibility, we deliver high-quality product solutions that support a more sustainable built environment.

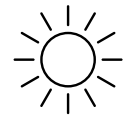
### Why Choose Our Finishes

Our finishes are applied using environmentally responsible powder coating, compliant with AAMA 2604 and 2605 standards. This method provides:

- Exceptional color retention and long-term durability
- Zero VOC emissions during application
- Reduced maintenance and waste over time



A high quality solution to the natural elements, LUXYCLAD® Snap-In Battens are non-combustible, UV resistant, LEED compliant, durable, rigid and low-maintenance.



### HIGH UV RESISTANCE

LUXYCLAD® high-performance finishes are AAMA 2604/05 rated, making them highly resistant to ultra violet (UV) rays which result in a long lasting, highly aesthetic product.



### CORROSION RESISTANT

LUXYCLAD® is made from architectural grade aluminum, sealed to offer extremely high weatherability and corrosion resistance even in the most extreme environments.



### NON COMBUSTIBLE & NON TOXIC

Class A fire rated, LUXYCLAD® is non-combustible and does not produce toxic fumes even at extremely high temperatures.



### SUSTAINABLE

LUXYCLAD® is manufactured from 70% recycled content and finished with hyper durable powder coatings which contain zero volatile organic compounds (VOC's). Our products are completely recyclable at the end of their life cycle.

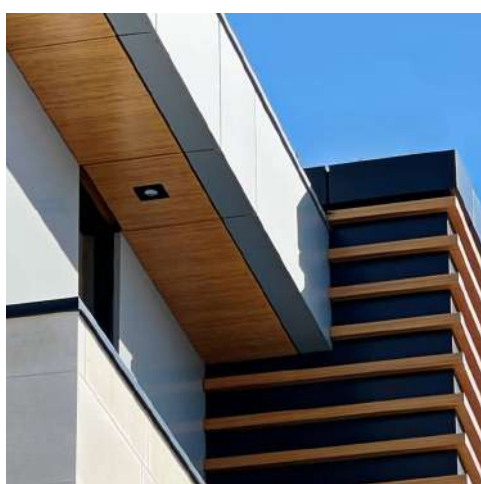




## FINISHES



Our products are ideal for exterior, interior, and high-traffic architectural applications, offering high resistance to fire, humidity, salt, detergents, and UV exposure. These state-of-the-art finishes, combined with the material properties of extruded aluminum, result in one of the most durable and long-lasting cladding systems on the market.



LUXYCLAD® offers a wide range of aesthetically appealing and environmentally friendly wood alternative finishes. These highly durable finishes do not require the high maintenance of real wood, making them a cost-effective and sustainable choice for modern architecture. Our finishes are available in a variety of textures, colors, and patterns, allowing for versatile design options that can perfectly match your project's aesthetic.



LUXYCLAD® offers a variety of solid colors, from vibrant to subtle shades.

We provide custom color matching and metallic finishes for a unique, glamorous touch to your home's exterior.



From the Oven Breakfast Sandwiches	Good All Day Pancakes, Waffles & Cake Pops	Freshly Warmed	Chilled & Refreshing
<ul style="list-style-type: none"><li>Three Cheese &amp; Egg \$4.99</li><li>Smoked Gouda &amp; Egg \$4.99</li><li>Smoked Gouda, Cheddar &amp; Egg White \$4.99</li><li>Smoked Gouda &amp; Egg \$4.99</li><li>Egg, Potato &amp; Bacon \$4.99</li><li>Smoked Gouda, Cheddar &amp; Bacon \$4.99</li><li>Smoked Gouda, Cheddar, Potato &amp; Egg \$4.99</li></ul>	<ul style="list-style-type: none"><li>Maple-Walnut Pancakes \$4.99</li><li>Maple-Walnut Pancakes \$4.99</li><li>Maple-Walnut Pancakes \$4.99</li><li>Maple-Walnut Pancakes \$4.99</li></ul>	<ul style="list-style-type: none"><li>Maple-Walnut Pancakes \$4.99</li><li>Maple-Walnut Pancakes \$4.99</li><li>Maple-Walnut Pancakes \$4.99</li><li>Maple-Walnut Pancakes \$4.99</li></ul>	<ul style="list-style-type: none"><li>Maple-Walnut Pancakes \$4.99</li><li>Maple-Walnut Pancakes \$4.99</li><li>Maple-Walnut Pancakes \$4.99</li><li>Maple-Walnut Pancakes \$4.99</li></ul>

## Contact Us

76 Ridley Road  
St. Catharines L2S 3Y8, ON Canada  
info@luxyclad.com  
1 (877)-255-1022

